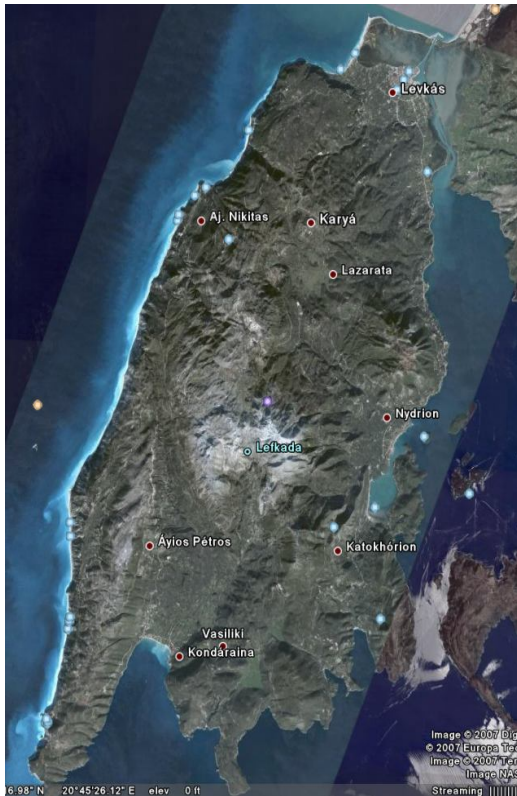
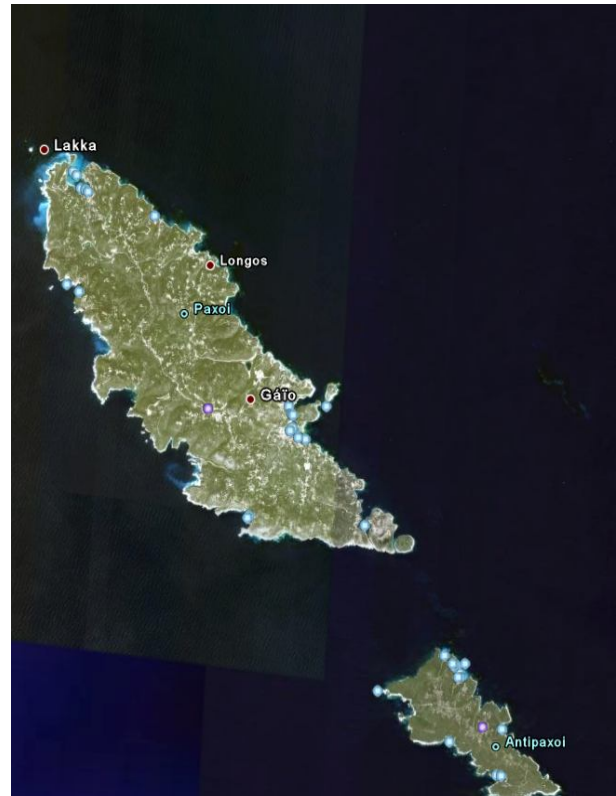


GOOGLE CHARTS OF THE IONIAN



Lefkas Island, frame is 18 nm X 10 nm
Nidri bay is on east coast ½ way down
Sivota bay is 2nd bay from east on S. coast



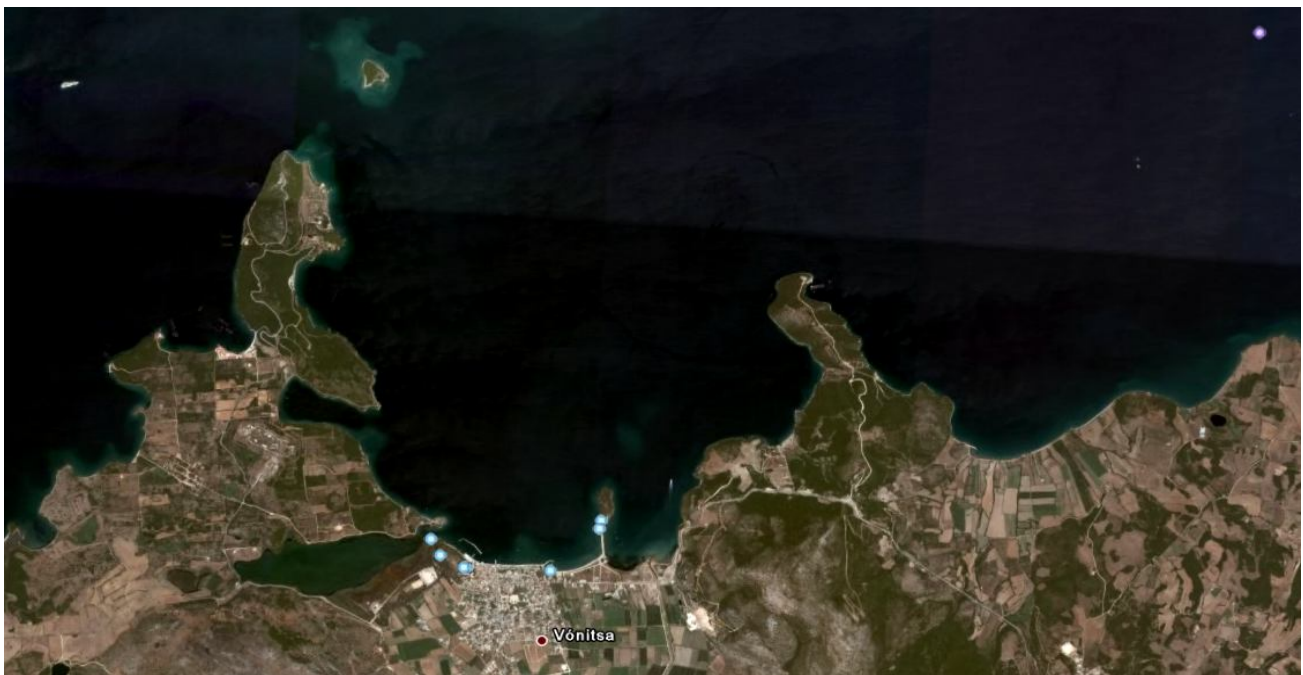
Paxos and Anti-Paxos Islands, frame is 10nm by 6nm



Preveza and Gulf of Actium, Mick's 1st Greek island is at the end of the small causeway just to the northeast of Vonitsa in the lower RH corner.
Frame is 10nm by 5nm



Northern half of Corfu Island with Erikoussa and Othani islands. Albania is to the north of the yellow line on the east side of the frame. Frame is approximately 25nm by 20nm



The town of Vonitsa and the little islet connected to the mainland by a causeway is called Koukoumitsa. The frame is approximately 6 nm by 3nm.